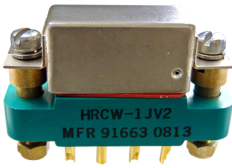


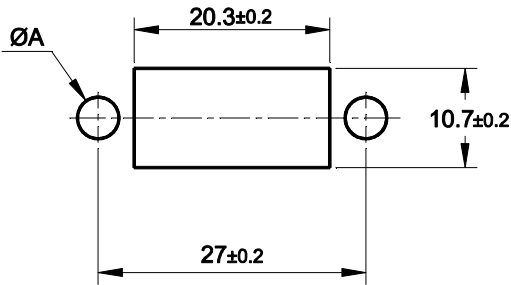
SOLDER CUP FOR #20AWG WIRE SIZE  
FÛTS À SOUDER POUR FIL TAILLE #20AWG

**Applicable relays:**

Series F250, F257, W260, GP5, 144



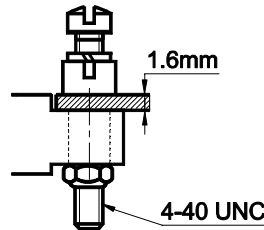
**MOUNTING HOLE LAYOUT  
DECOUPE DE LA STRUCTURE**



A = 4.3 ± 0.1 BOTTOM MOUNTING  
MONTAGE SOUS STRUCTURE  
= 3.2 ± 0.1 TOP MOUNTING  
MONTAGE SUR STRUCTURE

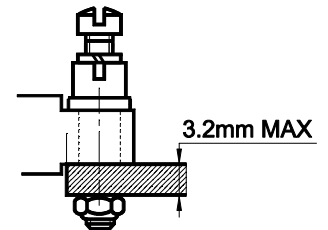
**BOTTOM MOUNTING  
MONTAGE SOUS STRUCTURE**

**HRCW-1JV2**



**TOP MOUNTING  
MONTAGE SUR STRUCTURE**

**HRCW-22JV2**



**GENERAL CHARACTERISTICS  
CARACTERISTIQUES GENERALES**

Temperature range / Température d'utilisation	-65° C to +125° C.
Weight / Masse	10g max.
Dielectric Strength at sea level / Rigidité diélectrique au niveau de la mer	1500 Vrms / 50Hz minimum
Supplied with mounting Hardware / Fourni avec visserie de montage	Recommended torque : 0,45 Nm
Meets the requirements of / répond à	MIL-DTL-12883
Gold plated contacts per / Contacts dorés selon	MIL-G-45204
Diallyl phthalate, glass-fiber filled per MIL-M-14 Diallyl phthalate, chargé en fibre de verre selon MIL-M-14	

**AMERICAS.**

Tel: +1 714-736-7599  
<http://www.esterline.com/powersystems>

**EUROPE.**

Tel: +33 3 87 97 31 01  
Fax: +33 3 87 97 96 86

**ASIA**

Tel: +852 2 191 3830  
Fax: +852 2 389 5803