



RoHS compliant

## Industrial 5/6-Port Unmanaged Ethernet Switches

EH2005/EH2006

EH2005-Fm (Multi-mode)



EH2005-Fs (Single-mode)

- 4 x 10/100BaseT(X) (RJ45)
- 1 x fiber port with ST (-Fm model) or SC (-Fs model)
- Broadcast storm protection
- Support IEEE 802.3/ 802.3u/ 802.3x
- 10/100M, Full/Half-Duplex, MDI/MDI-X auto-detection
- Redundant dual DC power inputs
- Operating temperature ranges from 0~60°C
- Rugged high-strength plastic case
- DIN-Rail or wall mount support



EH2006

The EH Series include 5/6-port Ethernet switches that provide two solutions, one with 6 RJ-45 ports and the other with 4 RJ-45 ports and one optic ST/SC port for your industrial applications. These EH series have been designed for industrial environments, such as in hazardous locations that comply with FCC, TUV, UL, and CE standards.

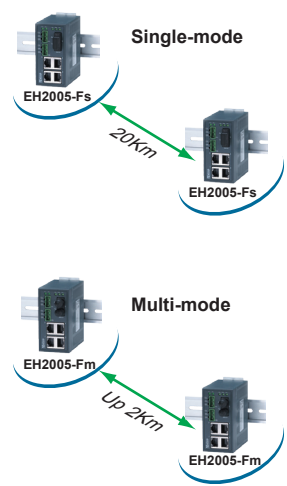
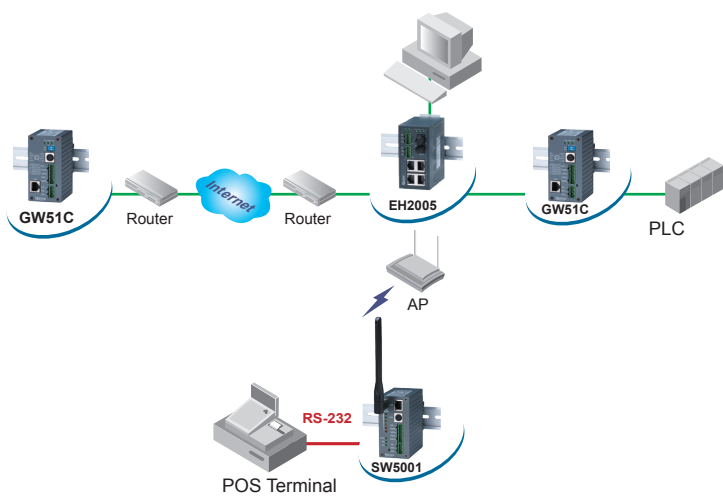
EH series protect itself from receiving too many broadcast packets. During normal use, broadcast packets will be forwarded to all ports except the source port. However, EH series will discard broadcast or multicast packets if the number of those packets exceeds a threshold in a preset period of time. When the preset period expires (about 800ms), it will then resume receiving broadcast or multicast packets until the threshold is reached again.

EH series provide 2 redundant power inputs that can be connected simultaneously to wide-range DC power sources. If one of the power inputs fails, the other live source acts as a backup to provide the EH series' power needs automatically.

# Industrial 5/6-Port Unmanaged Ethernet Switches

➔ EH2005-Fm/Fs / EH2006

Specifications	
<b>Ethernet</b>	
Transmission Rate	10/100Mbps
Total Port	5 / 6
10/100Mbps	5 / 6
Connector	RJ-45 x 4+ Fm/Fs x 1 (EH2005-Fm/Fs) / RJ-45 x 6 (EH2006)
Auto MDI/MDI-X	Yes
<b>Power</b>	
Input	DC 9 ~ 30V
Connector	3-pin 5.08mm pitch terminal block x 2
Consumption	4.5 Watts Max.
<b>Environment</b>	
Operating	0°C ~ 60°C ( 32° ~ 140°F )
Storage	-20° ~ 70°C ( -4°~ 185°F ), 5 ~ 95%RH
<b>Dimension</b>	
W x H x D	45mm x 90mm x 80mm
<b>MTBF(Hour)</b>	
Preceding	107296(EH2005-Fm/Fs) / 112092(EH2006)
Ordering Information	
<b>1P1EH2005FM001G</b>	Industrial 5-port Unmanaged Ethernet Switch with
<b>EH2005-Fm</b>	4x 10/100TX & 1x 10/100FX, multi-mode
<b>1P1EH2005FS001G</b>	Industrial 5-port Unmanaged Ethernet Switch with
<b>EH2005-Fs</b>	4x 10/100TX & 1x 10/100FX Single-mode
<b>1P1EH200600001G</b>	Industrial 6-port Unmanaged Ethernet Switch with 6x 10/100TX
<b>EH2006</b>	
Optional Accessories	
<b>Power Adapter</b>	US315-12(US / EU): AC100~240V/DC12V 5.08mm pitch Terminal block



## Atop Technologies, Inc.

TEL : +886-3-5508137  
 FAX : +886-3-5508131  
 sales@atop.com.tw  
 http : //www.atop.com.tw

Design and specification are subjected to change without notice.  
 All product names referenced herein are registered trademarks of their respective companies.



CA\_EH2005/2006\_E : v3-110119



Sensor Control Nordic AB



#### **Stockholm HQ**

Sensor Control Nordic AB  
Truckvägen 16B  
194 52 Upplands Väsby  
Phone number: +46 8-668 21 00

#### **Malmö**

Sensor Control Nordic Syd  
Rönneviksgatan 13  
213 74 Malmö  
Phone number: +46 40 -688 02 00

#### **Umeå**

Sensor Control Nordic Norr  
Umestans Företagspark  
903 47 Umeå  
Phone number: +46 90-969 71

[info@scn.se](mailto:info@scn.se)  
[www.scn.se](http://www.scn.se)



#### **Helsinki**

Sensor Control Nordic AB  
Teknobulevardi 3-5  
FI-01530 Vantaa, FINLAND  
Phone number: +358 20  
7348600

[info@scnnordic.fi](mailto:info@scnnordic.fi)  
[www.scnnordic.fi](http://www.scnnordic.fi)

#### **Tallinn**

Sensor Control Nordic AB  
Narva mnt 5  
10117 Tallinn, ESTONIA  
Phone number: +372  
6514550

[info@scn.ee](mailto:info@scn.ee)  
[www.scn.ee](http://www.scn.ee)

Connect with us on social media!

