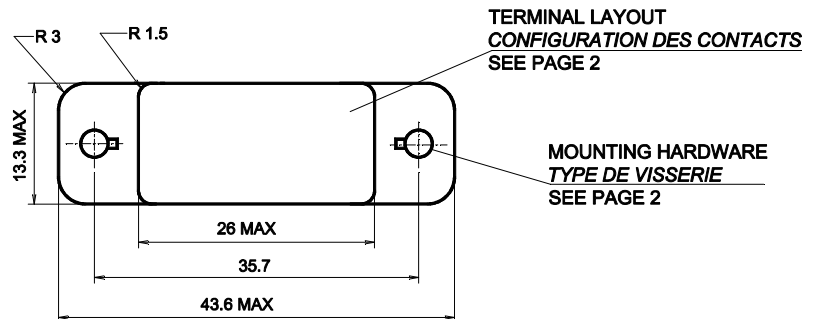


MARKING OF TERMINALS
ON TOP AND GROMMET
REPERAGE DES BORNES
SUR FACE SUPERIEUR ET
JOINT D'ETANCHEITE

Applicable relays and sensors:
S300: M300, FD300, FLS300, FLR300
S301: M301
S302: M302, FLR300



GENERAL CHARACTERISTICS CARACTERISTIQUES GENERALES

Tooling #16 <i>Outillage #16</i>	Crimp tool <i>Pince à sertir</i>	M22520/1-01 with turret M22520/1-02 (Blue)
	Insertion and extraction tool <i>Outil d'insertion et d'extraction</i>	M81969/14-03
Tooling #22 (for S302) <i>Outillage #22 (pour S302)</i>	Crimp tool <i>Pince à sertir</i>	M 22520/2-01 with turret M 22520/2-14
	Insertion and extraction tool <i>Outil d'insertion et d'extraction</i>	M 81969/14-01
Weight <i>Poids</i>		35g max
Temperature range <i>Température d'utilisation</i>		-70° C to +125° C
In accordance to <i>En accord selon</i>		MIL-DTL-12883/41
Contacts and hardware delivered in a separate plastic bag <i>Contacts et visserie livrés séparément dans un sachet plastique</i>		
Gasket sealed socket, crimp contacts <i>Socle étanche par joint silicone, contacts à sertir</i>		

AMERICAS.

Tel: +1 714-736-7599
<http://www.esterline.com/powersystems>

EUROPE.

Tel: +33 3 87 97 31 01
Fax: +33 3 87 97 96 86

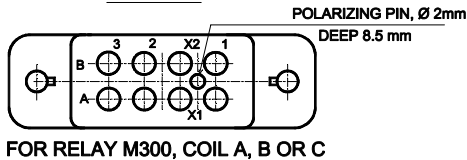
ASIA

Tel: +852 2 191 3830
Fax: +852 2 389 5803

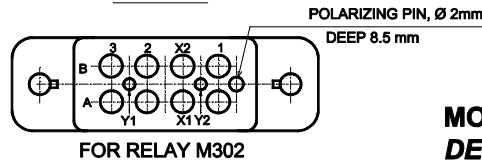
TERMINAL LAYOUT TYPE DE SORTIE

Dimensions in mm
Tolerances, unless otherwise specified, ±0.25mm

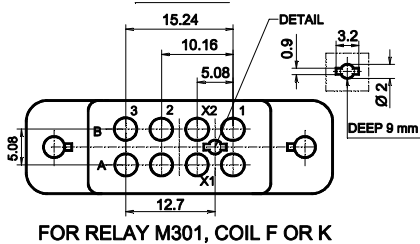
Series S300 Code A



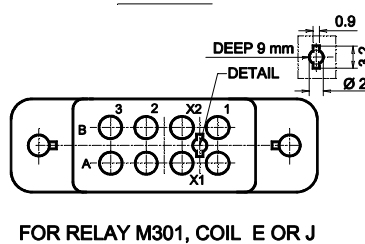
Series S302 Code D



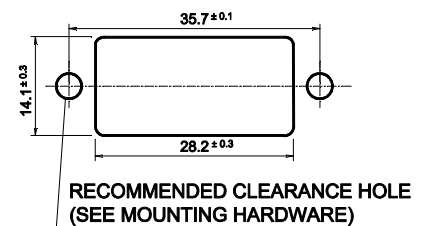
Series S301 Code B



Series S301 Code C



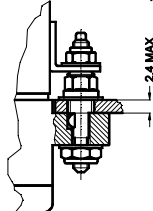
MOUNTING HOLE LAYOUT DECOUPE DE LA STRUCTURE



MOUNTING HARDWARE TYPE DE VISSERIE

CODE 1 : 05 284 12 LOOSE STUD UNC HARDWARE

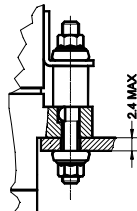
PANEL MOUNT HOLE: Ø 5,3



MOUNTING TORQUE
112-40: 0.45 Nm
190-32: 1.2 Nm

CODE 2 : 05 284 00 LOOSE STUD METRIC HARDWARE

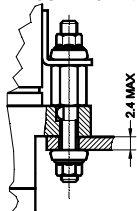
PANEL MOUNT HOLE: Ø 3,5



MOUNTING TORQUE
M3: 0.45 Nm

CODE 3 : 05 284 07 LOOSE STUD METRIC HARDWARE

PANEL MOUNT HOLE: Ø 3,5



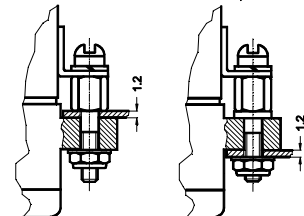
MOUNTING TORQUE
M3: 0.45 Nm

CODE 4 WITHOUT HARDWARE HOLE DIAM 2.9 mm FOR 112-40 SCREW

CODE 5 WITHOUT HARDWARE HOLE DIAM 3.1 mm FOR M3 SCREW

CODE 6 : 05 284 13 LOOSE STUD - UNC HARDWARE

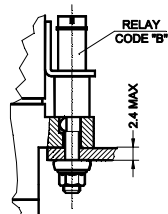
PANEL MOUNT HOLE: Ø 3,5



MOUNTING TORQUE
112-40: 0.45 Nm

CODE 7 : 05 284 15 LOOSE STUD METRIC HARDWARE

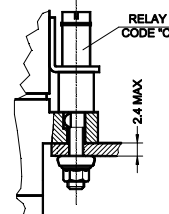
PANEL MOUNT HOLE: Ø 3,5



MOUNTING TORQUE
M3: 0.45 Nm

CODE 10 : 05 284 16 LOOSE STUD UNC HARDWARE

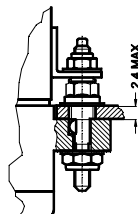
PANEL MOUNT HOLE: Ø 3,5



MOUNTING TORQUE
112-40: 0.45 Nm

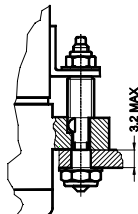
CODE 8 : 05 284 20 LOOSE STUD - UNC HARDWARE

PANEL MOUNT HOLE: Ø 5,3



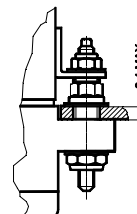
MOUNTING TORQUE
112-40: 0.45 Nm
190-32: 1.2 Nm

PANEL MOUNT HOLE: Ø 3,5



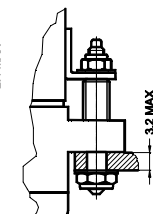
CODE 9 : 05 284 21 FIXED STUD - UNC HARDWARE

PANEL MOUNT HOLE: Ø 5,3



MOUNTING TORQUE
112-40: 0.45 Nm
190-32: 2.0 Nm

PANEL MOUNT HOLE: Ø 3,5



GROMMET TYPE
TYPE DE JOINT D'ÉTANCHEITE

Wire sealing: A silicone grommet is permanently bonded to the wire entry face of the socket so as to provide sealing capabilities for AWG size 16, 18 and 20 or 20, 22 and 24 or 22, 24 and 26 wire as applicable.

Étanchéité du fil : Un joint silicone fait partie intégrante du socle et permet de garantir une étanchéité des fils de AWG 16, 18 et 20 ou 20, 22 et 24 ou 22, 24 et 26.

	CODE A Recommended for contact Code 2 and 8	CODE B Recommended for contact Code 3 and 9
External wire diameter / Diamètre extérieur du Fil	Dimensions in mm	Dimensions in mm
Main contacts	1.2 to 2.4	0.8 to 1.6
X1-X2 Contacts	1.2 to 2.4	0.8 to 1.6
Y1-Y2 Contacts (S302)	0.8 to 1.4	0.8 to 1.4

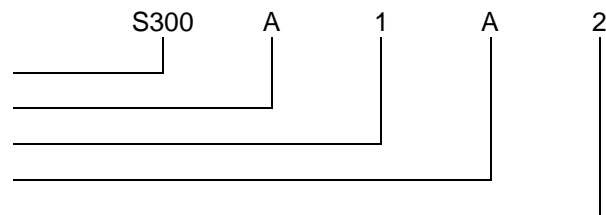
CONTACT SIZE AND STYLE
TAILLE ET STYLE DE CONTACTS

CODE 0 WITHOUT CONTACTS		CODE 2	CODE 3	CODE 8	CODE 9
05 911 00		<p>05 911 10</p> <p>MAIN CONTACTS CRIMP END TO ACCOMODATE WIRE # 16 - 18 - 20</p>	<p>05 911 10</p> <p>MAIN CONTACTS CRIMP END TO ACCOMODATE WIRE # 20 - 22 - 24</p>	<p>30 315 00</p> <p>MAIN CONTACTS (MIL-C-39029/92-533) CRIMP END TO ACCOMODATE WIRE # 16 - 18 - 20</p>	<p>31 315 10</p> <p>MAIN CONTACTS (MIL-C-39029/92-534) CRIMP END TO ACCOMODATE WIRE # 20 - 22 - 24</p>
05 912 00	Y1 -Y2 (S302)	<p>ASSOCIATED WITH CODE 2 OR 3 CRIMP END TO ACCOMODATE WIRE # 22 - 24 - 26</p>		31 036 00	<p>Y1 -Y2 (S302)</p> <p>ASSOCIATED WITH CODE 8 OR 9 (MIL-C-39029/92-531) CRIMP END ACCOMODATE WIRE # 22 - 24 - 26</p>

SOCKET NUMBERING SYSTEM
SYSTEME DE REFERENCES

Basic series designation | Référence de base

1. Terminal layout | Type de sorties
2. Mounting hardware | Type de visserie
3. Grommet type | Type de joint d'étanchéité
4. Contact size and style | Taille et style de contact



Exemple : S300-A1A2

MS/LEACH CROSS PART NO.
CORRESPONDANCE MIL/LEACH

MIL - Number	LEACH P/N	CONTACTS TYPE	HARDWARE	
MIL-DTL-12883/41	11S	S300-A8A8	8 x M39029/92-533	Loose Stud
	12S	S301-B8A8	8 x M39029/92-533	Loose Stud
	13S	S301-C8A8	8 x M39029/92-533	Loose Stud
	14S	S300-A8B9	8 x M39029/92-534	Loose Stud
	15S	S302-D8A8	8 x M39029/92-533 2 x M39029/92-531	Loose Stud
	16S	S300-A9A8	8 x M39029/92-533	Fixed Stud
	17S	S301-B9A8	8 x M39029/92-533	Fixed Stud
	18S	S301-C9A8	8 x M39029/92-533	Fixed Stud
	19S	S300-A9B9	8 x M39029/92-534	Fixed Stud
	20S	S302-D9A8	8 x M39029/92-533 2 x M39029/92-531	Fixed Stud